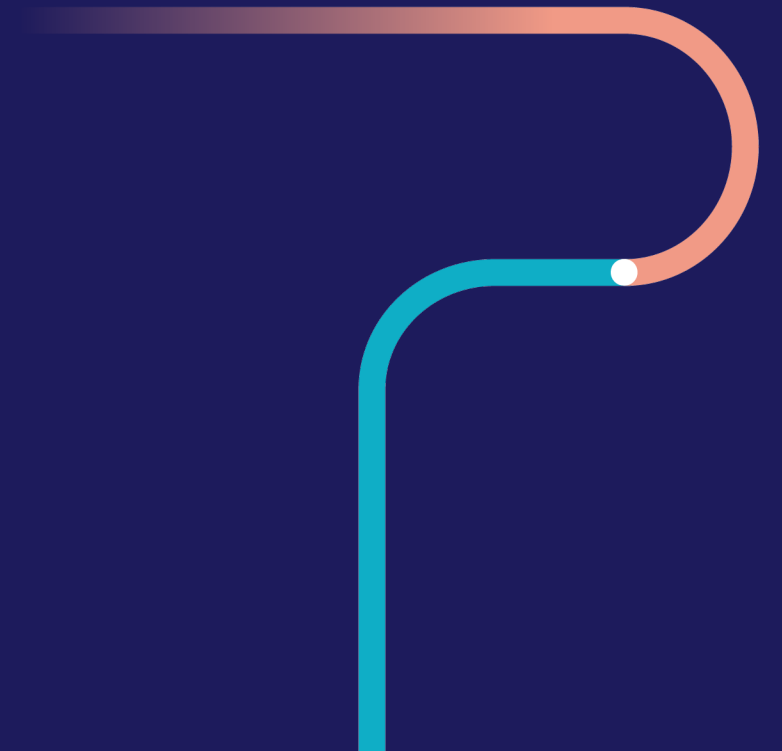




Driving Sustainable Mobility for All

May 31, 2023 | Frederic Tesfay & Lena Plikat



The **leading global implementation initiative** supporting city makers in developing and emerging countries in the transformation towards **sustainable urban mobility**.



# TUMI DATA

Datos para una  
movilidad sostenible

MARCO  
CONCEPTUAL

1.1

Aplicaciones  
web en LAC

1

PLATAFORMA DIGITAL  
PARA LA PROMOCIÓN DE  
DATOS ABIERTOS DE  
MOVILIDAD

2

PILOTOS EN CIUDADES  
DE AMÉRICA LATINA Y  
EL CARIBE (LAC)

3

AGENDA FUTURA DE  
INVESTIGACIÓN,  
INNOVACIÓN Y  
TECNOLOGÍA.

mobility  
data  
hub

THE  
100  
QUESTIONS



DATA

Diversas fuentes, capas y  
bases de datos.

+

COMITÉ ASESOR

Expertos en ciencia de datos,  
movilidad urbana sostenible,  
inclusión y gobernanza.





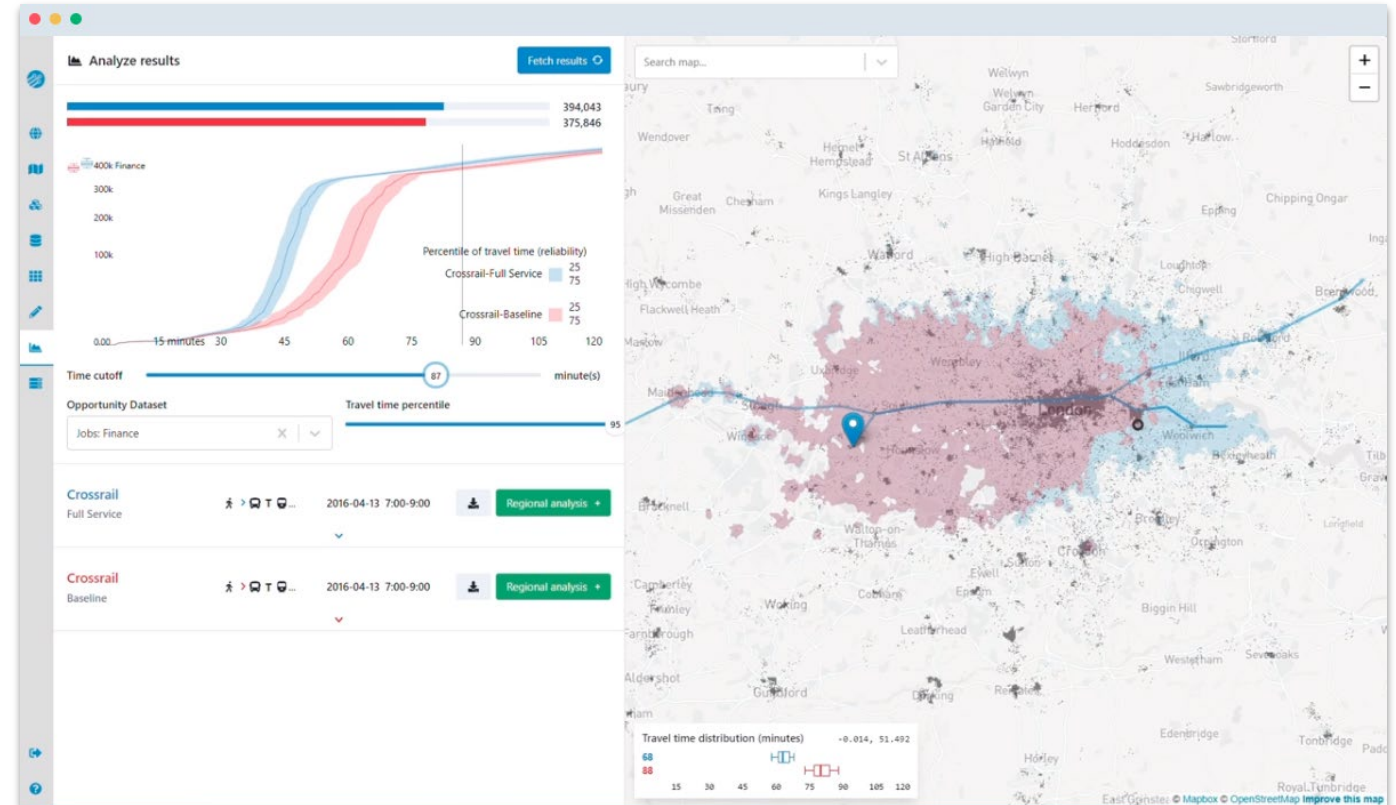
# Why Mobility and Data must work together

- Adapting urban mobility to the changes of the 21<sup>st</sup> century is a key challenge
- For this we need:
  - evidence-based and
  - well-considered decisions→ High-quality data
- However, urban mobility data is often **inaccessible**, lacks **quality** and/or is **biased**.



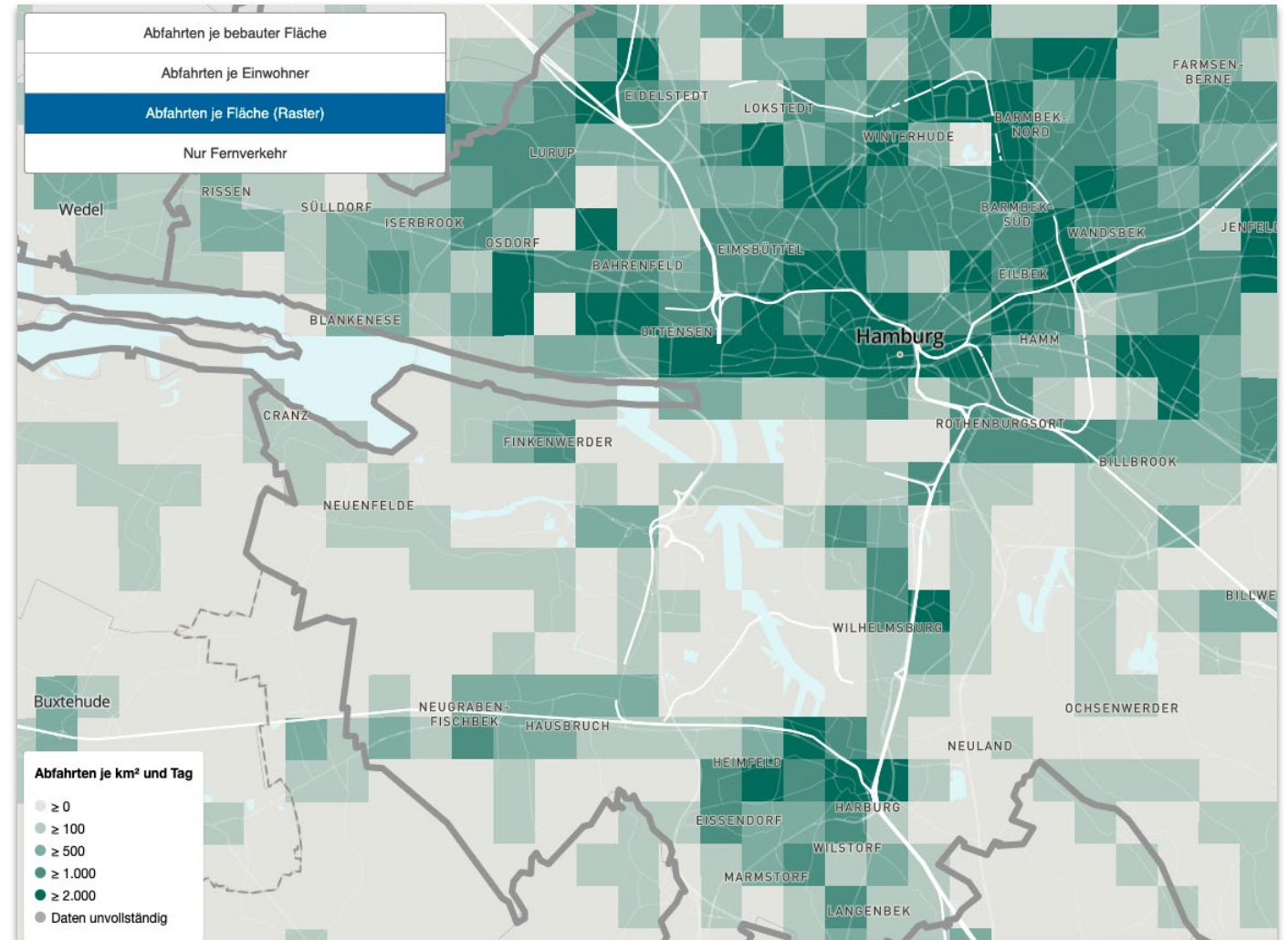
# How Data and Mobility can work together

- The use of data in the sector is manifold, e.g.
  - Urban and traffic planning
  - Research
  - Strategic planning
  - Service operation & demand-driven offers
  - Predicting future passenger loads
  - Monitoring KPIs
  - Internal knowledge
- New data sources are being made available (mobile phone applications, social media, remote sensing/satellite data)



# Data Governance

- "Thinking in silos": Data is not shared between departments or agencies within the same city
- Problems with:
  - Availability (locked away)
  - Usability (difficult to process)
  - Standardization
  - Documentation
  - Updates





# The case for Data Hubs

- Data hubs are used by many cities worldwide to collect, organize, and share data:

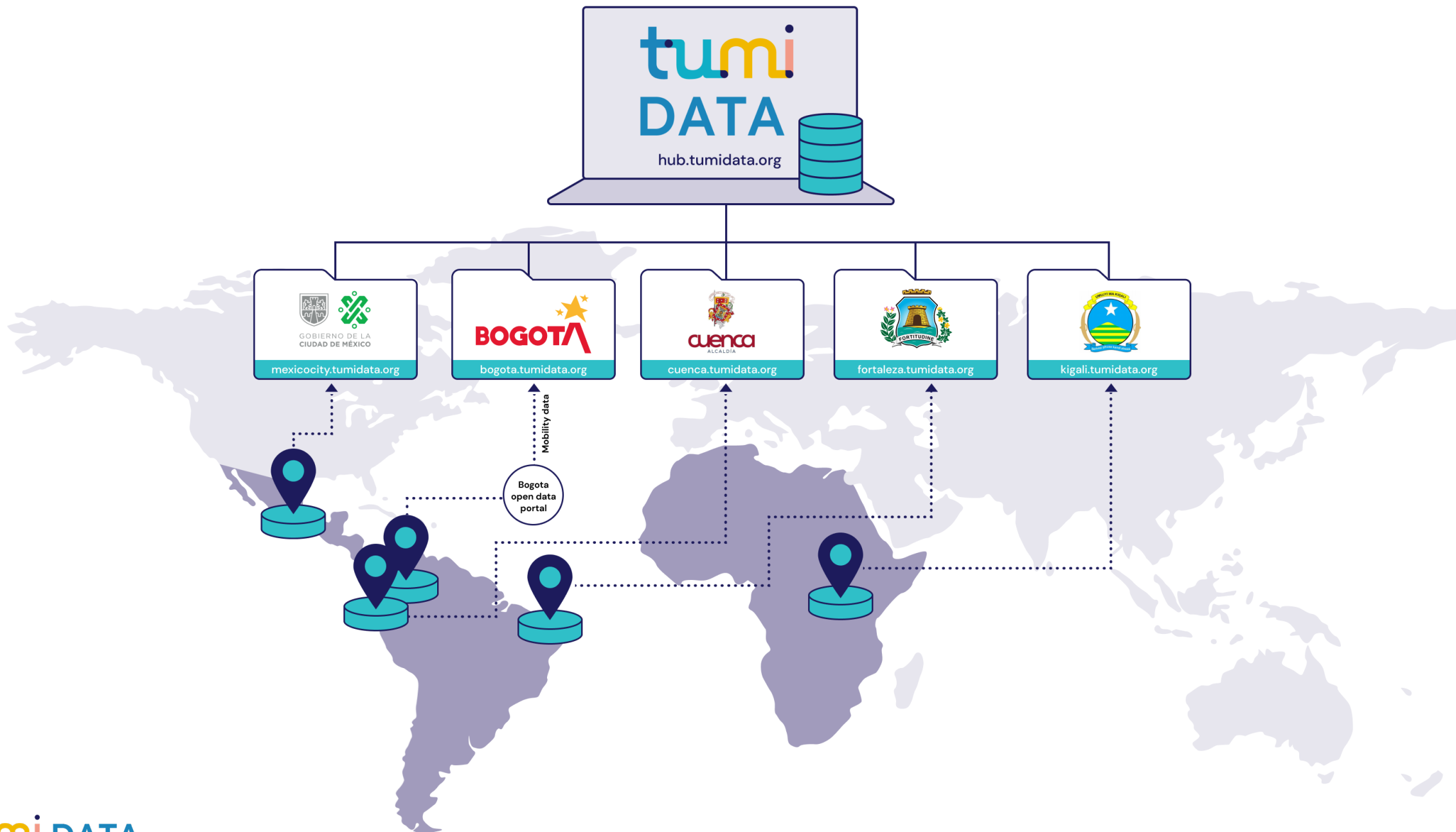
- Real-time insights
- Data standardization
- Interoperability
- Easy access

- Key challenges for implementing a data hub:

- Lack of high-quality datasets
- Technical capacity
- Infrastructure

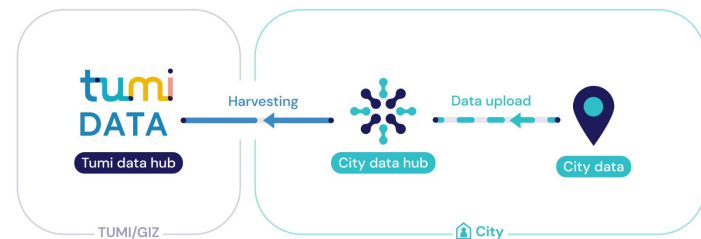
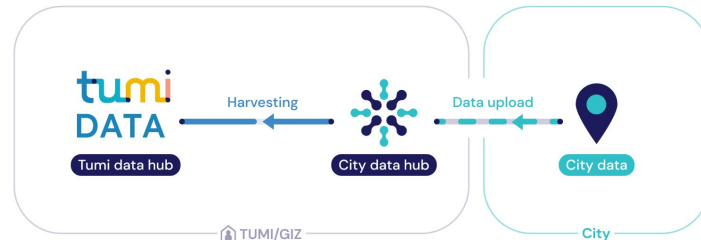
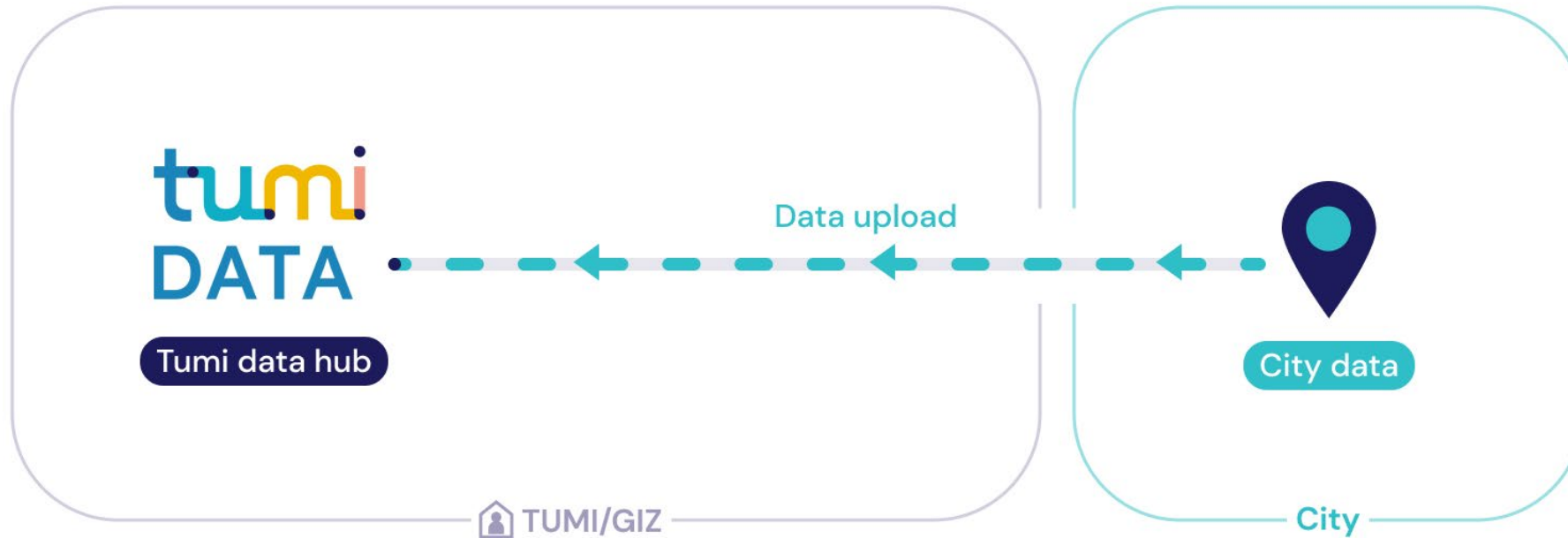
City	Original Language	English	Hierarchy
Accra	Public transport map in Accra	Public transport map in Accra	Public Transport – Timetable-bound PT
Accra	Greater Accra Region Fire Outbreak Categories 2008	Greater Accra Region Fire Outbreak Categories 2008	Environmental Data – Environmental / Clim
Accra	Greater Accra Region Fire Outbreak Categories 2010	Greater Accra Region Fire Outbreak Categories 2010	Environmental Data – Environmental / Clim
Accra	Trends in Road Accidents and Casualties Greater Accra Region (1991 - 2011)	Trends in Road Accidents and Casualties Greater Accra Region (1991 - 2011)	Planning & Policy – Safety of the transport
Accra	Right to information ACT 2019 (ACT 989)	Right to information ACT 2019 (ACT 989)	Planning & Policy – Policy
Accra	Accra Mobile Map_VClean_V2	Accra Mobile Map_VClean_V3	Public Transport – Timetable-bound PT
Accra	GTFS_Accra	GTFS_Accra	Public Transport – Timetable-bound PT
Accra	Tracks and stops of the lines	Tracks and stops of the lines	Public Transport – Transport Network Geometries (Geodata)
Accra	List of the lines	List of the lines	Public Transport – Transport Network Geometries (Geodata)
Accra	All the stops	All the stops	Public Transport – Transport Network Geometries (Geodata)
Accra	Annual Distribution of Fatalities by Road Environment	Annual Distribution of Fatalities by Road Environment	Planning & Policy – Safety of the transport
Accra	Annual Distribution of Non-Urban Fatalities by Road User Class	Annual Distribution of Non-Urban Fatalities by Road User Class	Planning & Policy – Safety of the transport
Accra	Vehicle Type Involved in Accidents	Vehicle Type Involved in Accidents	Planning & Policy – Safety of the transport
Accra	Annual Distribution of Casualties by Sex	Annual Distribution of Casualties by Sex	Planning & Policy – Safety of the transport
Accra	Trends in Road Accidents and Casualties Greater Accra Region from 1991 to 2011	Trends in Road Accidents and Casualties Greater Accra Region from 1991 to 2011	Planning & Policy – Safety of the transport
Accra	Administrative Boundaries, Accra, Ghana, 1990	Administrative Boundaries, Accra, Ghana, 1990	Planning & Policy – Planning
Accra	November 2019 Sensor Data Archive	November 2019 Sensor Data Archive	Environmental Data – Air Quality Data
Cairo	Stops data for the GCR in Shapelle	Stops data for the GCR in Shapelle	Public Transport – Transport Network Geometries (Geodata)
Cairo	Trips data for the GCR in Shapelle	Trips data for the GCR in Shapelle	Public Transport – Transport Network Geometries (Geodata)
Cairo	GTFS feed for the formal and paratransit in the GCR + the Cairo metro	GTFS feed for the formal and paratransit in the GCR + the Cairo metro	Public Transport – Timetable-bound PT
Cairo	GTFS for the formal and paratransit in the GCR	GTFS for the formal and paratransit in the GCR	Public Transport – Timetable-bound PT
Cairo	GTFS Metro	GTFS Metro	Public Transport – Timetable-bound PT
Cairo	Greater Cairo Region Data Factsheet (Q4 – 2018)	Greater Cairo Region Data Factsheet (Q4 – 2018)	Planning & Policy – Planning
Cairo	Egypt Admin Boundaries	Egypt Admin Boundaries	Planning & Policy – Planning
Cairo	2011/2011: الجمهورية مصر العربية - النشرة السنوية لإحصاءات النقل العام للركاب داخل وخارج المدن	Arab Republic of Egypt - Annual Bulletin of Public Transport Statistics	Public Transport – Other
Cairo	Statistical data on workplaces, hospitals, schools and others generated by the Ministry of Planning	Statistical data on workplaces, hospitals, schools and others generated by the Ministry of Planning	Traffic Generating Parameters – Workplace
Cairo	The First Step Towards Cairo's SMART Ring Road: A Data-Driven Approach	The First Step Towards Cairo's SMART Ring Road: A Data-Driven Approach	Planning & Policy – Planning
Cairo	Cairo Traffic Congestion Study : Final Report	Cairo Traffic Congestion Study : Final Report	Individual Transport – Traffic Volume
Cairo	Urban Mobility in Cairo	Urban Mobility in Cairo	Planning & Policy – Planning
Cairo	Mobility Cairo App	Mobility Cairo App	Public Transport – Other
Cairo	COVID-19 Community Mobility Report El Cairo	COVID-19 Community Mobility Report El Cairo	Traffic Generating Parameters – Other
Cairo	The Transit Map	The Transit Map	Public Transport – Timetable-bound PT
Cairo	Mapping Air Quality in Greater Cairo	Mapping Air Quality in Greater Cairo	Environmental Data – Air Quality Data
Cairo	Egypt Number of Registered Vehicles: Private Cars	Egypt Number of Registered Vehicles: Private Cars	Planning & Policy – Driving License Owners
Cairo	How can Transit Mapping Contribute to Achieving Adequate Urban Mobility	How can Transit Mapping Contribute to Achieving Adequate Urban Mobility	Public Transport – Other
Cairo	Urban Land Cover, Cairo, Egypt, 2000	Urban Land Cover, Cairo, Egypt, 2000	Traffic Generating Parameters – Land Cover
Cairo	Land Cover Mapping Analysis and Urban Growth Modelling Using Remote Sensing	Land Cover Mapping Analysis and Urban Growth Modelling Using Remote Sensing	Traffic Generating Parameters – Land Cover
Cairo	Multipurpose Landcover Database for Egypt - AFRICOVER	Multipurpose Landcover Database for Egypt - AFRICOVER	Traffic Generating Parameters – Land Cover
Cairo	Egypt - Subnational Administrative Boundaries	Egypt - Subnational Administrative Boundaries	Planning & Policy – Planning

```
City;Original Language ;English;Filetype;Extent;Resolution;Accra;Public transport map in s5W;https://github.com/JungleGeotiff);City;,,,,;unknown;Accra;Greater Accra Region Fire outbreak segregated into cost a189c9a8-9cf9-4c0d-840f-907577d749e0#(view-graph:{graphOptions:{hooks:{processOffset:{},bindEvents:{}}}},graphOptions:{hook available;Free;https://drive.google.com/drive/folders/1S5WKKYNhR8Uo6xb15FdokavwvQuZCj7?usp=sharing;;National Information T 2020;;unknown;Accra;Greater Accra Region Fire Outbreak Categories 2010;Greater Accra Region Fire Outbreak Categories 2011;Environmental D outbreak segregated into cost of salvage, damage, deaths, injuries etc. for the year 2010.;02/04/2022;Direct Download;https://dat 9065e864-9331-4d4b-a422-169d6bd9bfa9#(view-graph:{graphOptions:{hooks:{processOffset:{},bindEvents:{}}}},graphOptions:{hook available;Free;https://drive.google.com/drive/folders/1S5WKKYNhR8Uo6xb15FdokavwvQuZCj7?usp=sharing;;National Information T 2020;;unknown;Accra;Trends in Road Accidents and Casualties Greater Accra Region (1991 - 2011);Trends in Road Accidents and Casualties Gr space;Trends in Road Accidents and Casualties Greater Accra Region from 1991 to 2011;02/04/2022;Direct Download;https://dat d351c20a-6604-4951-9479-9441515a4b5b#(});;Licensed but publicly available;Free;,,,,;Country;,,,,;unknown;Accra;Right to information ACT 2019 (ACT 989);Right to information ACT 2019 (ACT 989);Planning & Policy – Policy;The Govern application from a specific person;02/04/2022;No online Access;http://elibrary.jsg.gov.gh/fg/laws%20of%20ghana/2%20REP/RIGH Data;Free;https://drive.google.com/drive/folders/11C1xRzeeDHvk8Y003vHaQMKKbJTR0Pb?usp=sharing;;Public Affairs Department.;Accra;Accra Mobile Map_VClean_V2;Accra Mobile Map_VClean_V3;Public Transport – Timetable-bound PT;A map of transport route accra/-/blob/master/map/Accra%20Mobile%20Map_VClean_V2.svg;;Licensed but publicly available;Free;https://drive.google.com/d 1Hmk-nJVMogak9sV_m_IdwMnNG2uLAdJs?usp=sharing;;DigitalTransport4Africa;;Image (e.g. JPG, PNG);City;,,,,;unknown;Accra;GTFS_Accra;GTFS_Accra;Public Transport – Timetable-bound PT;GTFS data of Accra;02/05/2022;Direct Download;https://git GTFS_Accra.zip?inline=false;;Licensed but publicly available;Free;https://drive.google.com/drive/folders/19_wK0XFV8DKI9QHeS /2017;;unknown;Accra;Tracks and stops of the lines;Tracks and stops of the lines;Public Transport – Transport Network Geometries (Geodata)
```

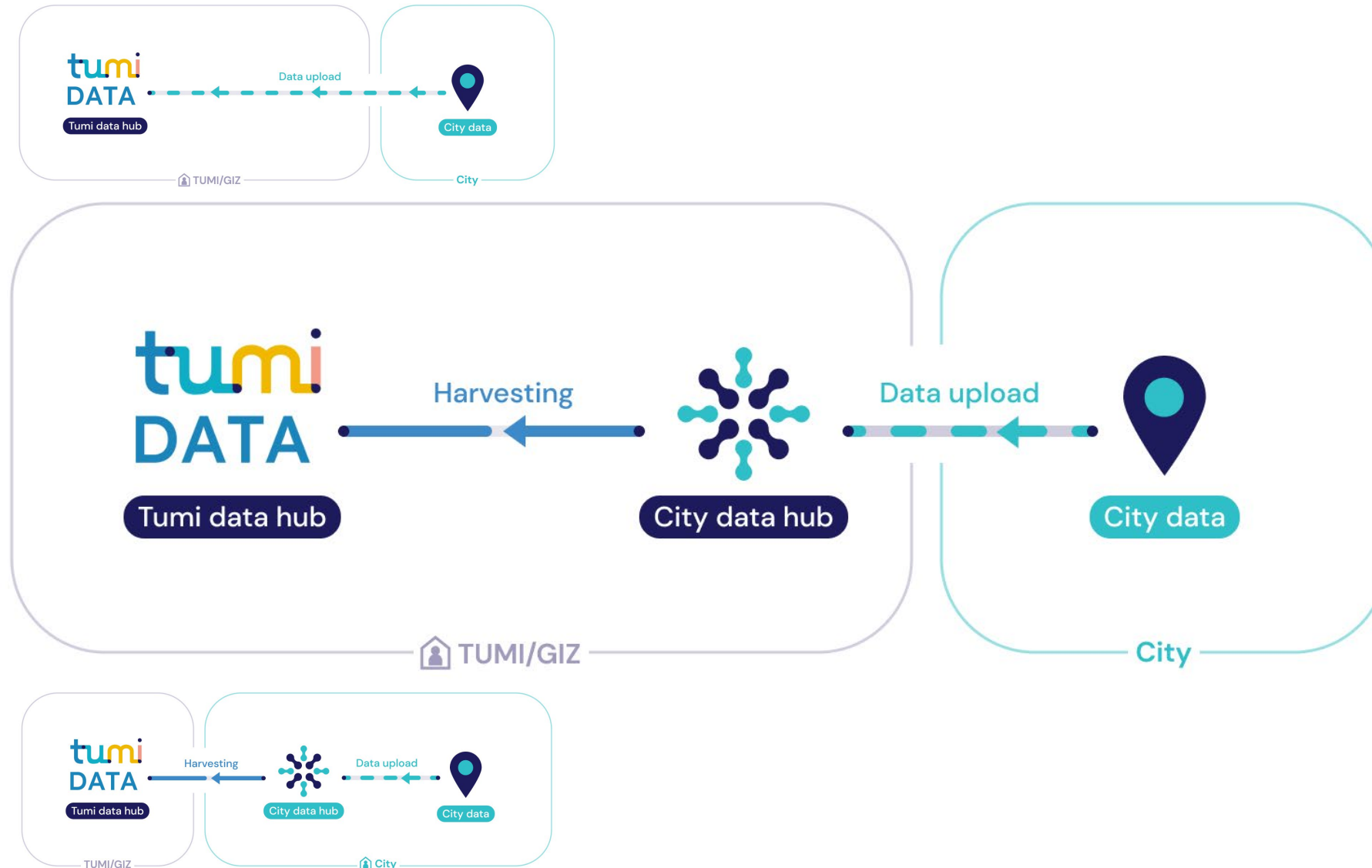




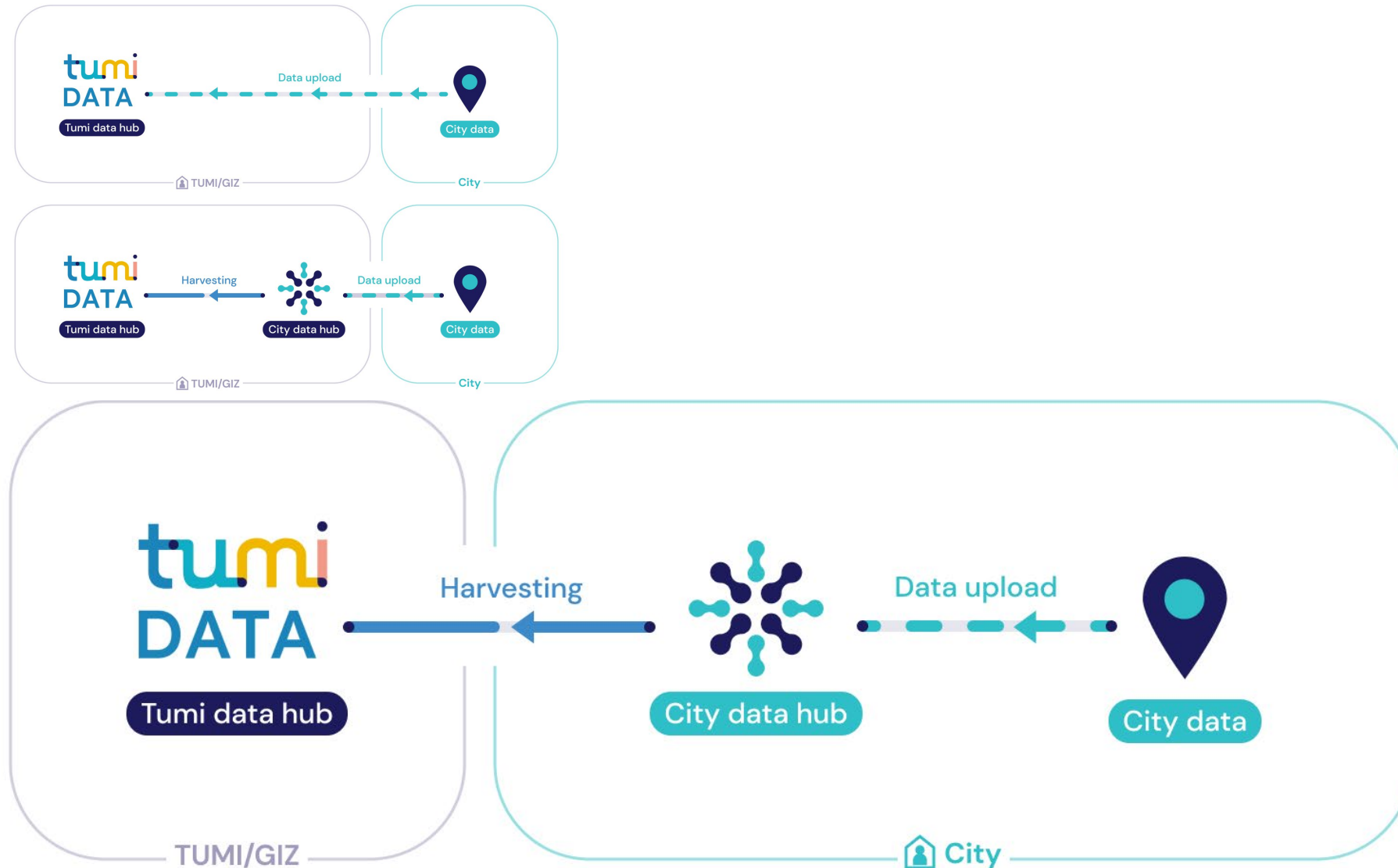
# How to include data in the hub? – Direct upload



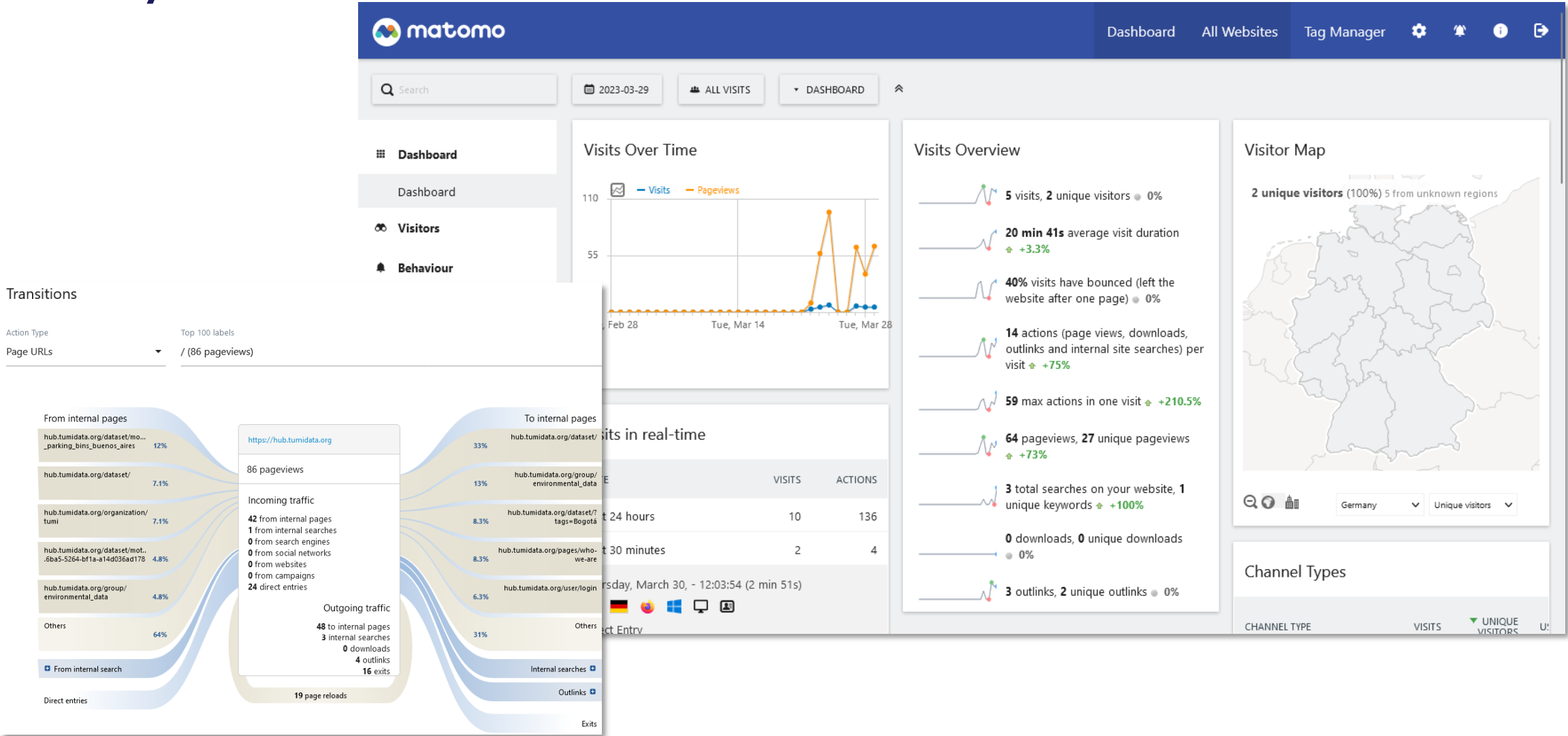
# How to include data in the hub? – Integrated city instance



# How to include data in the hub? – Independently managed city instance



# Analytics





# The TUMI approach

- The open-source SaaS (Software as a Service) can **accelerate the development of mobility data hubs**
- TUMI ensures **GDPR compliance**
- TUMI's ecosystem includes **local hubs for cities** to collect and manage mobility data (harvesting instance)
- The option to harvest data from non-TUMI hubs provides a **flexible approach to data collection**

